



The Anthracite Chapter

NEWS

February 2017

ASHRAE - Shaping Tomorrow's Built Environment Today

2016-2017 OFFICERS & CHAIRS

President:

Alyssa Procida
aprocida@climatempac.com
(570) 283-2880

President-Elect:

Eric Turner
eftdd@aol.com
(570) 287-4035

Vice-President

Matt Grasso
matt@jfohora.com
(570) 342-7778

Treasurer:

Jon Keller
jon@jfohora.com
(570) 342-7778

Secretary & Young Engineers in ASHRAE Co-Chair:

Walt Stout
wstout@borton-lawson.com
(720) 333-5091

Board of Governors:

Joseph Cottone: (570) 347-6414
Rich Karns: (570) 287-3161 x210

Board of Governors &

Chapter Technology Transfer Chair:
Matt Archey, PE
marchey@borton-lawson.com
(570) 821-1994 x1257

Grassroots Government Activities Chair:

A.J. Speicher, PE
aspeicher@borton-lawson.com
(570) 821-1994 x 303

Historian & Newsletter Editor:

Walt Janus, PE
wjanus@gpinet.com
(570) 342-3700 x5915

Membership Promotion Chair:

Gary Booth
garybooth@energyt.com
(570) 899-2391

Research Promotion Co-Chair:

Ruth Ann Rocchio
ruthannrochio@gmail.com
(570) 476-7262

Student Activities Chair & Young Engineers in ASHRAE Co-Chair:

Katrina Malaski
katrina.malaski@trane.com
(570) 821-4960

Website Homepage Editor:

Karl Grasso
kgrasso@anemostat.com
(570) 562-2778

President's Message

Greetings Everyone!

This month we will be joined by our colleagues from the Pennsylvania Society of Professional Engineers (PSPE) to celebrate Engineer's Week. We will also be hosting Distinguished Lecturer, Mr. Chris McDonald. Please make them feel welcome!

The Chapter is working hard to improve upon events held in the past and also introduce new and exciting ways to involve our members and loyal supporters. On March 31st, for the first time in chapter history, we will be holding a comedy fundraiser at Mohegan Sun to assist in our research promotion goals. This event will not be limited to our Chapter or its members. Everyone is welcome, family, friends, co-workers, and clients. A flyer will be distributed with all the details. Spread the word and thank you for your continued support!

The clock is ticking for nominating and promoting chairs for the 2017-2018 year. Should you like to nominate someone for a position or are interested yourself, please contact me. The future of our chapter relies on its volunteers and supporters. We must do our part no matter how much or how little we can be involved.

Thank you for keeping up with our monthly newsletter. Shout out to our Newsletter Editor Walt Janus, always a job well done!!

See you on Tuesday,

A handwritten signature in cursive script that reads "Alyssa".

Chapter Website: <http://anthracite.ashraechapters.org>

ASHRAE ANTHRACITE CHAPTER MEETING

Tuesday February 21, 2017

Document Management and Discovery – How Documents and E-mails Are Used in Litigation

Presented by

Christopher M. McDonald, Esq.

Christopher M. McDonald is a partner at Shook, Hardy & Bacon L.L.P., a law firm headquartered in Kansas City, Missouri. He has been with the firm for twenty-five years engaged in the practice of law focusing on toxic tort, environmental, regulatory and indoor air quality issues. He also focuses on advising clients relating to litigation avoidance and preparedness. Much of his work deals with complex scientific and technical issues. Chris is the Division Managing Partner for the firm's General Litigation and Business Services Division and also has served on the firm's Executive Committee.

Mr. McDonald, an associate member of ASHRAE, has chaired TC 1.7 Legal Education and Business Management and also served on the ASHRAE Presidential Ad Hoc Committee on Homeland Security. Mr. McDonald is an ASHRAE Distinguished Lecturer and has authored numerous articles and given numerous presentations on issues relating to liability for indoor air quality problems and mold contamination and steps to take to avoid liability for such problems. He has also presented on issues relating to information management and discovery in civil litigations as it relates to engineering practices.

This talk will explain how documents and e-mails are used in litigation. It will provide sample documents to help illustrate how adversaries will use documents to their advantage in litigation. It will also provide tips on how to manage documents to avoid creating documents that can be taken out of context and used against a potential defendant.

A Certificate of Attendance will be available at the registration table

Location: Holiday Inn - East Mountain
600 Wildflower Dr, Wilkes-Barre, PA 18702, (570) 822-1011

Schedule: 5:00-5:45 p.m. Business Meeting (All are Welcome)
5:30-6:30 p.m. Social Hour (Cash Bar)
6:00-6:30 p.m. Program Registration
6:30-7:15 p.m. Dinner (Buffet)
7:15-8:30 p.m. Announcements & Technical Presentation

Cost: \$ 30.00 cash or check / \$ 32.00 credit card / FREE for Students

**Only If You Are Planning to Attend Please Respond by NOON on FRIDAY February 17, 2017
to Walt Janus at (570) 342-3700 Ext. 286 or via e-mail at wjanus@gpinet.com**

NEWS and Notes

ASHRAE Webcast

ASHRAE's upcoming webcast, titled *Take Control: Using Analytics to Drive Building Performance*, will broadcast live on April 20, 2017, from 1:00 – 4:00 pm EDT. The Anthracite Chapter will again host a FREE local event at Ruth's Chris (watch for more details in future editions of the NEWS). You can also watch the webcast for FREE from any computer. The presenters will discuss key elements of controls and analytics for building operations," said Nathan Hart, chair of the CTTC Webcast Ad Hoc Committee. "The focus will be on recognizing the value of analytics in building operations to achieve reduced cost and increased performance." PDH credits are available. For more information and to register see www.ashrae.org/webcast.

Research Promotion Fundraiser Slated for Wisecrackers

The Anthracite Chapter RP Committee is sponsoring a comedy fundraiser at Wisecrackers at the Mohegan Sun Pocono Downs on Friday March 31. Proceeds benefit ASHRAE Research. More details are shown on Page 8 of the NEWS. Contact RP Chair Ruth Ann Rocchio ruthannrochio@gmail.com for tickets or more information.



ASHRAE Certification

More than 2,500 industry professionals hold an ASHRAE Certification. Are you ready to join them? See pages 9 & 10 of the NEWS for information on getting certified and standing out in the crowd.

Technology Corner

There is no technical article included in this month's edition of the NEWS. Please submit articles to CTTC chair Matt Archey for consideration to be included in future editions.

Sponsor the NEWS

We are again offering the opportunity to sponsor our monthly newsletter. Sponsors will be recognized in each issue of the NEWS. The suggested donation is \$50 for the entire year (10 issues). We are also offering to post employment opportunities for a donation of \$25 for Chapter members and \$50 for nonmembers per issue. Please contact newsletter editor Walt Janus for more information.

Thanks to Our Sponsors



Chris Amico
Outside Sales Associate Applied Products
chris.amico@bjtterrioni.com
 Cell: 717-991-4662



GARY BOOTH
 PROJECTS ENGINEER
garybooth@energyt.com
570-788-3845 Ext 28

591 North Hunter Highway
 Drums, PA 18222
 P: 1-800-222-1931
 F: 570-788-6072
 C: 570-899-2391
www.energyt.com

Linc
 service
 Innovative HVAC Solutions

HEATING • VENTILATION • AIR CONDITIONING • PA14829

Phone: (570) 587-1188
 JIM COLMAN

FAX: (570) 587-4798



COLMAN SALES CO., INC.
 P.O. BOX 275
 CLARKS SUMMIT, PENNA. 18411

Representing
 Greenheck Fan Corp. • Price Industries • Bilco Products
 Curbs Plus • Ohio Gratings



Bob Costello
 Controls Service Manager

503 Yatesville Rd
 Pittston, PA 18640

Office: 570.883.9563
 Fax: 570.883.9564
 Cell: 570.466.1435
 Toll-free/24 hrs: 800.724.4252
bcostello@postler.com
postlerandjaeckle.com



R.D. Bitzer Co., Inc.
 776 American Drive
 Bensalem, PA 19020
 Phone: (215) 604-6600
 Fax: (215) 604-6601
 Direct Line: (215) 604-6606

DOUGLAS C. COWAN
 SALES ENGINEER
 Mobile: (215) 694-7428

representatives and distributors of hydronic and industrial equipment
 E-mail: dcowan@rdbitzer.com www.rdbitzer.com



RON KELLER
 President

JON KELLER
 Sales Manager

MATT GRASSO
 Project Manager

WWW.JFOHORA.COM

The display of business cards in the NEWS recognizes the financial support of the Chapter by the individual or business and does not constitute an endorsement or recommendation by ASHRAE or the Anthracite Chapter.

Thanks to Our Sponsors



PHIL LATINSKI, PE

Commercial Area Manager

MITSUBISHI ELECTRIC US, INC.
COOLING & HEATING
Northeastern PA Region
Mobile: 570.575.6051
E-mail: platiniski@hvac.mea.com
www.mehvac.com



General Air
An Employee Owned Company

P.O. Box 110
Darby, PA 19023
610.532.3070
Fax: 610.532.3077
Cell: 610.496.8918
Email: clock@genairesys.com

CORY LOCK
Sales Engineer



117 NEW FREDERICK ST.
WILKES-BARRE, PA 18702

570.208.4822 (P)

570.208.4340 (F)

MATTHEW A. MARTIN, P.E.

JASON MOORE

MATT SITLER

LAURA EASTON

www.ebshvac.com

MEIER SUPPLY CO., INC.

Refrigeration, Air Conditioning & Heating



Michael A. Mecchi
Commercial Sales Engineer
610.437.9818 Office
610.437.4924 Fax
610.674.3326 Cell
888.651.0471

827 N. Meadow Street
Allentown, PA 18102
www.MeierSupply.com
MMecchi@MeierSupply.com

Daniel A. Mello, CPD

230 Washington Ave., West Wyoming, PA 18644

Certified Plumbing Designer

Life Member - ASHRAE

Member - ASPE

Phone: 570.288.8759
Cell: 570.466.7993
e-mail: d.mello@comcast.net



The display of business cards in the NEWS recognizes the financial support of the Chapter by the individual or business and does not constitute an endorsement or recommendation by ASHRAE or the Anthracite Chapter.

Thanks to Our Sponsors



L&R Associates, Inc.
Manufacturers Representatives Mechanical Products
LINDA MONTVILLE
Providing You With The Best Solutions

267-308-0500 Fax 267-308-0505
Cell 610-333-5110 lmontville@landrassocinc.com

www.landrassocinc.com

Ruth Ann Rocchio – Research Promotion Chair



ruthannrochio@gmail.com

Thank you for your generous support of
ASHRAE Research



**BLANKIN
EQUIPMENT**

Rick Seasholtz
Sales Engineer

office: 215.229.7400
direct: 484.322.5536
cell: 267.767.7938
fax: 215.228.2560

rseasholtz@blankinequipment.com

489 Shoemaker Road
King of Prussia, PA 19406

www.blankinequipment.com



SINCE 1939

NATIONAL AIR FILTER
Service Co. of New Jersey, Inc.

74 Sand Park Road
Cedar Grove, NJ 07009

STEPHAN SHYKA
Sales Engineer
sshyka@nationalairfilter.com
Cell: (908) 400-9151

Main Office: (201) 438-0800
Direct: (973) 559-9932
Fax: (201) 438-0049



R. Paul Silvestre
Inside Sales Associate Applied Products

Paul.Silvestre@bjterroni.com
Cell: 215-431-9357



Charles C. Smith, P.E.
principal
cell: 570.760.9010
csmith@smithmiller.net
www.smithmiller.net

hvac
plumbing
fire protection
electrical
technology
energy
commissioning

providing total integration of engineered systems

38 N. Main Street, Pittston, PA 18640 p: 570.299.5865 ext 303 f: 570.299.7865

The display of business cards in the NEWS recognizes the financial support of the Chapter by the individual or business and does not constitute an endorsement or recommendation by ASHRAE or the Anthracite Chapter.

**Anthracite Chapter
Past-Presidents**

2015-16 Rich Karns	2006-07 John Havenstrite	1997-98 Dean Butler	1988-89 Bud Reilly
2014-15 Matt Archey	2005-06 Manish Patel	1996-97 Charlie Smith	1987-88 Ray Suhocki
2013-14 Matt Archey	2004-05 A.J. Lello	1995-96 Chuck Swinderman	1986-87 Jerry Peznowski
2012-13 Tracey Jumper	2003-04 Dennis Gochoel	1994-95 John Walker	1985-86 Lee Garing
2011-12 A.J. Speicher	2002-03 Phil Latinski	1993-94 Dennis McGraw	1984-85 Spence Martin
2010-11 Tom Swartwood	2001-02 Mike Moran	1992-93 Scott Harford	1983-84 Donald Brandt
2009-10 Brian Flynn	2000-01 Dennis Gochoel	1991-92 Dan Mello	1982-83 Rich Santee
2008-09 Eric Zanolini	1999-00 John Durdan	1990-91 Mark Hagen	1981-82 Bob Mugford
2007-08 Walt Janus	1998-99 Matthew Martin	1989-90 Paul Dreater	1980-81 Kerry Freeman

ANTHRACITE CHAPTER MEETINGS & EVENTS 2016-17

Date	Theme	Program	Speaker
Sept. 20	Membership/ Bring-a-Buddy	Seismic Piping Design for Hospitals and Lab Spaces	Phil Argersinger
Oct. 18	Research Promotion – Donor Recognition	Boiler Installation Requirements	Bill James
Nov. 15	Students/YEA	Improving Health Through Energy Efficiency	Al Neuner
December	Family Night	No Meeting	--
Jan. 10	Technical Tour	Wegman's Refrigeration Tour	Bill Frederick Frank Kilyanek
Jan. 17	Research Promotion	System Effects and Their Implications on Fan Performance	Ron Michael
Feb. 21	Engineer's Week Joint Meeting w/ PSPE	Document Management and Discovery – How Documents & E-mails Are Used in Litigation	Chris McDonald*
Mar. 21	Nominating Night Joint Meeting w/ SMACNA	Energy Recovery	James Martin
April 18	Students/Membership	A Holistic Overview of Technologies and Strategies to Achieve Deep Energy Reductions in Laboratories	Gordon Sharp*
April 20	ASHRAE Webcast	Take Control: Using Analytics to Drive Building Performance	Panel
May 16	Past-Presidents	Kitchen Exhaust Hoods	TBA
June 20	Fun & Fellowship	Mark A. Hagan, PE Memorial Golf Outing	--
Aug. 17-19	Chapters Regional Conf.	2017 Region III CRC - Roanoke, VA	--

*ASHRAE Distinguished Lecturer

ASHRAE MISSION

- To advance the arts and sciences of heating, ventilating, air conditioning and refrigerating to serve humanity and promote a sustainable world.

ASHRAE VISION

- ASHRAE will be the global leader, the foremost source of technical and educational information, and the primary provider of opportunity for professional growth in the arts and sciences of heating, ventilating, air conditioning and refrigerating.

The Anthracite Chapter NEWS

Walt Janus, Editor
c/o Greenman-Pedersen, Inc.
50 Glenmaura National Blvd, Suite 102
Scranton, PA 18505



RESEARCH PROMOTION



**MOHEGAN SUN POCONO
1280 HIGHWAY 315
WILKES-BARRE, PA 18702**

FRIDAY MARCH 31, 2017

**9:00 PM SHOW TIME
(DOORS OPEN AT 8:00)
GENERAL ADMISSION SEATING**

\$20.00 PER TICKET

**FOR TICKETS CONTACT
ANY CHAPTER MEMBER
OR
RUTH ANN ROCCHIO 570-242-2361**

**COME OUT!!
ENJOY A GREAT SHOW
AND SUPPORT [RP](#)**

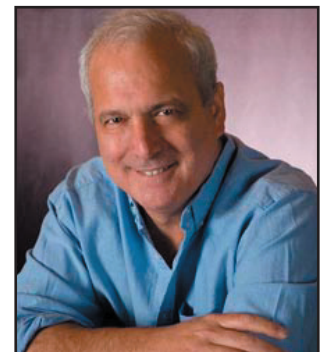
PRESENTS A COMEDY FUNDRAISER



RICHIE BYRNE



JOHN CONSOLI



SCOTT BRUCE

THERE'S SOMETHING FUNNY GOING ON HERE!

The Benefits of an ASHRAE Certification

SHINE IN A RISING FIELD

Certification validates critical job knowledge, skills and abilities in a given practice area.

GAIN A COMPETITIVE EDGE

ASHRAE certifications are recognized by over 30 national, state and municipal entities.

DISTINGUISH YOURSELF

Use the ASHRAE Certified logo and designation—e.g. Curtis Smith, BEAP, BEMP—in email signatures, professional networking and business cards to enhance your reputation.

LET ASHRAE PROMOTE YOUR ACHIEVEMENT

Certificants and their employers are listed on the website and in ASHRAE *Insights*.



5 Easy Steps to Earn and Maintain an ASHRAE Certification

1. Read the *Candidate Guidebook*

Visit www.ashrae.org/certification and download the guidebook for the program in which you are interested.

2. Complete the Application

Complete the online application at www.ashrae.org/certification. Membership in ASHRAE is not a requirement for certification.

3. Schedule an Examination

BCxP, BEAP, BEMP, HBDP, HFDP and OPMP examinations are offered at over 300 conveniently located computer-based testing centers worldwide. Candidates may schedule an examination appointment online or by telephone.

4. Review Available Resources

The *Candidate Guidebook* for a program identifies available resources, including practice exams, that may help candidates gain an understanding of the body of knowledge that the examination tests. Purchase of books or course registrations is not a prerequisite to taking any ASHRAE certification examination.

5. Renew the Certification

Each certification is renewable every three years. To retain certification, each certification holder must earn 45* Professional Development Hours (PDHs) during the three year period following initial certification or the last renewal.

*BCxP requires 50 PDHs.

Schedule an exam at one of over **300 testing centers** worldwide
TODAY!

To learn more or apply, please go to
www.ashrae.org/certification

ASHRAE Certification

More than 2,500 professionals certified in six key built-environment fields.

Are You Ready to Join Them?



Validation. Pride. Recognition.

"Because of the high level of expertise, professionalism and ethics demonstrated by ASHRAE, achieving certification under their established requirements implies one of the highest levels of competence and knowledge available in the industry."

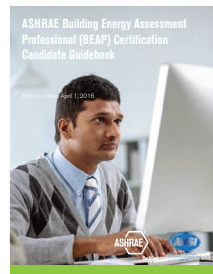
Jeffrey G Ross-Bain, BEMP, Ross-Bain Green Building, LLC



ASHRAE, the standard setter for sustainable building performance and system design and operation, validates through certification the critical knowledge, skills and abilities of professionals in six key, built-environment fields.

Recognized by over 30 national, state and local government bodies – and with over 2,500 certifications earned – ASHRAE certifications increasingly have become the must-have credential for built-environment professionals.

Building Energy Assessment Professional (BEAP)

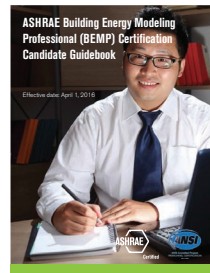


The growing emphasis on energy consumption reduction and cost savings has highlighted the need for credible specialists who assess energy use in buildings. The BEAP certification validates competency to *audit, assess and analyze residential, commercial and industrial building energy use and develop and implement recommendations.*

The BEAP certification is integral to ASHRAE's Building Energy Quotient (BuildingEQ) program, as is its BEMP certification.

Together, the programs provide a valuable toolkit when it comes to the evaluation and reduction of building energy use. Two separate Workbooks, As Designed and In Operation, are part of the BuildingEQ program. Submitting both of these Workbooks can earn an As Designed and In Operation building rating. Only those certified as BEAPs, or Professional Engineers licensed in the jurisdiction where a BuildingEQ project is located, may submit the In Operation Workbook. Additionally, only BEAPs (and BEMPs whose certification relates to the As Designed Workbook) may display the BuildingEQ Certified Provider logo with descriptions of their services.

Building Energy Modeling Professional (BEMP)



The BEMP certification validates competency to *evaluate, select, implement, calibrate and interpret the results of energy modeling software when applied to new and existing building and systems energy performance.*

The BEMP certification complements ASHRAE's Building Energy Quotient (BuildingEQ) program by helping to ensure that only qualified practitioners can submit As Designed Workbooks to receive building ratings from ASHRAE. Only those certified as BEMPs, and Professional Engineers licensed in the jurisdiction where a BuildingEQ project is located, may submit the As Designed Workbooks to ASHRAE. Like BEAPs who may submit In Operation BuildingEQ Workbooks, BEMPs may display the BuildingEQ Certified Provider logo with descriptions of their services.

Building Commissioning Professional (BCxP)



The BCxP certification validates competency to *lead, plan, coordinate and manage a commissioning team to implement commissioning processes in new and existing buildings.*

Many building owners look for ways to lower energy bills, reduce change orders during construction, avoid premature equipment replacement costs, and create safer and healthier buildings. Building commissioning measures and tunes up performance of existing buildings and ensures that new buildings begin their lifecycle at optimal productivity.

High-Performance Building Design Professional (HBDP)



The HBDP certification, an ANSI accredited certification program, validates competency to *design and integrate sustainable HVAC&R systems into high performing buildings.*

Today's building design market requires use of ground-breaking technologies in new and existing structures to meet the need of building owners.

Healthcare Facility Design Professional (HFDP)



The HFDP certification validates competency to *incorporate standards, guidelines and regulatory codes as well as unique healthcare facility requirements and design principles in HVAC system design.*

Growing numbers of aging medical facilities, advances in technology, shifting environmental requirements and an increasingly older population have created a critical need for expansion and renovation of healthcare facilities.

Operations & Performance Management Professional (OPMP)



The OPMP certification validates competency to *manage facility operations and maintenance to achieve building performance goals, including those related to indoor environmental quality, health and safety.*

Today's complex buildings can fade from green to gray when building operators don't realize the full potential of the systems they manage. Staying current with the latest facility operation strategies and technologies can reduce energy use in buildings by 10% to 40%.

Value of Earning Your ASHRAE Certification

In a recent "Value of Certification" survey, this is what ASHRAE-certified professionals had to say:

- *ASHRAE Certification validates my level of specialized knowledge and ability (89%).*
- *ASHRAE Certification helps differentiate me from my peers (82%).*
- *In my field, ASHRAE Certification has provided me with greater professional recognition (73%).*