



The Anthracite Chapter

NEWS

April 2017

ASHRAE - Shaping Tomorrow's Built Environment Today

2016-2017 OFFICERS & CHAIRS

President:

Alyssa Procida
aprocida@climatempac.com
(570) 283-2880

President-Elect:

Eric Turner
eftdd@aol.com
(570) 287-4035

Vice-President

Matt Grasso
matt@jfohora.com
(570) 342-7778

Treasurer:

Jon Keller
jon@jfohora.com
(570) 342-7778

Secretary & Young Engineers in ASHRAE Co-Chair:

Walt Stout
wstout@borton-lawson.com
(720) 333-5091

Board of Governors:

Joseph Cottone: (570) 347-6414
Rich Karns: (570) 287-3161 x210

Board of Governors & Chapter Technology Transfer Chair:

Matt Archey, PE
marchey@borton-lawson.com
(570) 821-1994 x1257

Grassroots Government Activities Chair:

A.J. Speicher, PE
aspeicher@borton-lawson.com
(570) 821-1994 x 303

Historian & Newsletter Editor:

Walt Janus, PE
wjanus@gpinet.com
(570) 342-3700 x5915

Membership Promotion Chair:

Gary Booth
garybooth@energyt.com
(570) 899-2391

Research Promotion Co-Chair:

Ruth Ann Rocchio
ruthannrochio@gmail.com
(570) 476-7262

Student Activities Chair & Young Engineers in ASHRAE Co-Chair:

Katrina Malaski
katrina.malaski@trane.com
(570) 821-4960

Website Homepage Editor:

Karl Grasso
kgrasso@anemostat.com
(570) 562-2778

President's Message

Greetings!

Thank you to our supporters and RP chair Ruth Ann Rocchio for making our first comedy fundraiser for research promotion a success! For those who couldn't join us and purchased tickets, remember you have until the end of June to attend another show.

You will soon be receiving a link to vote for 2017-2018 officer nominees. Please take a moment to participate in this ballot to ensure next year is even more successful than this year. I appreciate each and every one of you who has put their name in the hat. Because of you, the Anthracite Chapter will continue to thrive and achieve great things!

Please join me on Tuesday in welcoming our second distinguished lecturer of the year, Mr. Gordon Sharp. Our meeting theme is students and members. I encourage you to invite any prospective members to attend.

RSVP's are due by April 13th for our ASHRAE Webcast event being held at Ruth's Chris Steakhouse in Mohegan Sun on the 20th. The attendee reviews last year were very good, don't miss out!

Summer is right around the corner. Continue to round up your foursomes for this year's Mark A. Hagan, PE Memorial Golf Outing at Blue Ridge Golf Course. With a little luck, we will have beautiful weather and make many more great memories together. Thank you for your participation.

Have a blessed and safe holiday. See you at the station!

Alyssa

Chapter Website: <http://anthracite.ashraechapters.org>

ASHRAE ANTHRACITE CHAPTER MEETING

Tuesday April 18, 2017

A Holistic Overview of Technologies and Strategies to Achieve Deep Energy Reductions in Laboratories

Presented by

Gordon P. Sharp

Mr. Sharp is the chairman of Aircuity, Inc. and has over 25 years of wide-ranging entrepreneurial experience and more than 25 U.S. patents in the fields of energy efficiency and laboratory controls. As founder, former president and CEO of Phoenix Controls, he led the development of this world leader in laboratory airflow controls that was acquired by Honeywell in 1998. The technologies invented by Mr. Sharp at Phoenix Controls are today saving over \$1.5 billion annually in energy use. In 2000, Mr. Sharp founded Aircuity, which was spun out of Honeywell and is a smart airside energy efficiency company.

Mr. Sharp is a graduate of MIT with bachelors and masters degrees in electrical engineering. He is Executive Vice President and a member of the board of directors of I2SL (International Institute for Sustainable Laboratories), the nonprofit foundation that operates the Labs21 conference. He is also a member of two important standards on ventilation: the ANSI/AIHA Standard Z9.5 Committee on Laboratory Ventilation and the ASHRAE SSPC 170 Committee on Ventilation of Health Care Facilities. He is also a voting member of ASHRAE technical committee TC9.10: Laboratory Systems and TC9.11: Clean Spaces/Cleanrooms.

Mr. Sharp is a frequent speaker at national and international conferences on the topics of energy efficiency in buildings and indoor environmental quality and has testified before the US Congress on the topics of climate change and energy efficiency.

As we strive to build more energy efficient laboratories and vivariums, the most impactful approach is often to reduce the outside airflow. In the last few years new design approaches such as demand based control of lab air change rates, chilled beams (hydronic cooling), and VAV exhaust fan control have been successfully employed to safely reduce these lab airflows to as low as 2 ACH to cut energy consumption significantly. Although these concepts may have been discussed individually in the past, this talk provides a holistic discussion of how these and other energy saving technologies such as heat recovery can be combined to create a whole that is greater than the sum of the parts. Several case studies will be provided as well as the results of a sophisticated lab energy analysis tool to determine potential energy and capital cost savings for a typical lab building.

A Certificate of Attendance will be available at the registration table

Location: **Radisson Lackawanna Station**
1700 Lackawanna Ave, Scranton, PA 18503 (570) 342-8300

Schedule: 5:00-5:45 p.m. Business Meeting (All are Welcome)
5:30-6:30 p.m. Social Hour (Cash Bar)
6:00-6:30 p.m. Program Registration
6:30-7:15 p.m. Dinner (Buffet)
7:15-8:30 p.m. Announcements & Technical Presentation

Cost: \$ 30.00 cash or check / \$ 32.00 credit card / FREE for Students

**Only If You Are Planning to Attend Please Respond by NOON on FRIDAY April 14, 2017
to Walt Janus at (570) 342-3700 Ext. 286 or via e-mail at wjanus@gpinet.com**

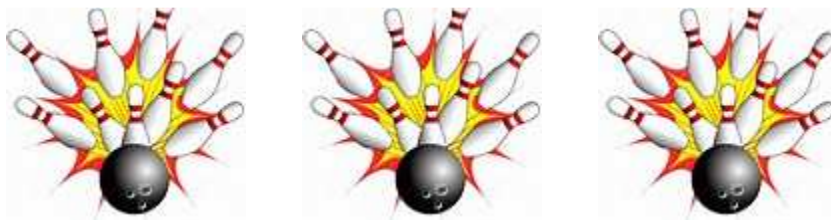
NEWS and Notes

ASHRAE Webcast

ASHRAE's upcoming webcast, titled *Take Control: Using Analytics to Drive Building Performance*, will broadcast live on April 20, 2017, from 1:00 – 4:00 pm EDT. The Anthracite Chapter will again host a FREE local event at Ruth's Chris. **There are still seats available, but you must reserve your spot by tomorrow April 13th.** Complete details on the event are on page 8 of the *NEWS*. You can also watch the webcast for FREE from any web device. The presenters will discuss key elements of controls and analytics for building operations," said Nathan Hart, chair of the CTTC Webcast Ad Hoc Committee. "The focus will be on recognizing the value of analytics in building operations to achieve reduced cost and increased performance." PDH credits are available. To register to watch on your own see www.ashrae.org/webcast.

Young Professionals Bowling Night April 20th

All students and professionals 35 or younger are invited to attend the upcoming *Young Professionals Bowling Night* to take place on Thursday, April 20 from 5:45-7:45 pm at Chacko's in Wilkes-Barre. The event is free and will include pizza, soft drink, and bowling. This is a joint event co-sponsored by the Anthracite Chapter, the Wilkes ASHRAE Student Chapter, and the Wilkes PSPE Student Chapter. Complete details are on page 9 of the *NEWS*. Please RSVP by sending an e-mail to Brian Palmiter (bpalmiter@borton-lawson.com) OR to Seth Kunkel (seth.kunkel@wilkes.edu) by Tuesday, April 18. If you have any questions, please feel free to contact Brian.



Annual Golf Outing Set for June 20th

Mark your calendars and dream of warm spring days: our annual Mark A. Hagan, PE Memorial Golf Outing will be here before you know it. Come celebrate the beginning of summer (one day early) and enjoy a round of golf with your ASHRAE colleagues and friends. What better way to mark the end of another great ASHRAE year? The golf committee has been hard at work. Watch for more details heading your way very soon.

Technology Corner

This month's technical article "Using CO₂ in Supermarkets" is included at the end of this month's edition of the *NEWS* and is courtesy of AHSRAE Journal. Please submit articles to CTTC chair Matt Archey for consideration to be included in future editions.

Thanks to Our Sponsors



Chris Amico

Outside Sales Associate Applied Products

chris.amico@bjterroni.com

Cell: 717-991-4662

Phone: (570) 587-1188
JIM COLMAN

FAX: (570) 587-4798



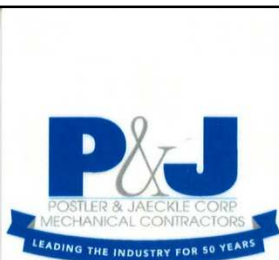
COLMAN SALES CO., INC.

P.O. BOX 275

CLARKS SUMMIT, PENNA. 18411

Representing

Greenheck Fan Corp. • Price Industries • Bilco Products
Curbs Plus • Ohio Gratings



Bob Costello

Controls Service Manager

503 Yatesville Rd
Pittston, PA 18640

Office: 570.883.9563

Fax: 570.883.9564

Cell: 570.466.1435

Toll-free/24 hrs: 800.724.4252

bcostello@postler.com

postlerandjaeckle.com



R.D. Bitzer Co., Inc.

776 American Drive

Bensalem, PA 19020

Phone: (215) 604-6600

Fax: (215) 604-6601

Direct Line: (215) 604-6606

DOUGLAS C. COWAN

SALES ENGINEER

Mobile: (215) 694-7428

representatives and distributors of hydronic and industrial equipment

E-mail: dcowan@rdbitzer.com www.rdbitzer.com



RON KELLER
President

JON KELLER
Sales Manager

MATT GRASSO
Project Manager

WWW.JFOHORA.COM

The display of business cards in the NEWS recognizes the financial support of the Chapter by the individual or business and does not constitute an endorsement or recommendation by ASHRAE or the Anthracite Chapter.

Thanks to Our Sponsors



PHIL LATINSKI, PE

Commercial Area Manager

MITSUBISHI ELECTRIC US, INC.
COOLING & HEATING
Northeastern PA Region
Mobile: 570.575.6051
E-mail: platiniski@hvac.mea.com
www.mehvac.com



General Air
An Employee Owned Company

P.O. Box 110
Darby, PA 19023
610.532.3070
Fax: 610.532.3077
Cell: 610.496.8918
Email: clock@genairesys.com

CORY LOCK
Sales Engineer



117 NEW FREDERICK ST.
WILKES-BARRE, PA 18702

570.208.4822 (P)

570.208.4340 (F)

MATTHEW A. MARTIN, P.E.

JASON MOORE

MATT SITLER

LAURA EASTON

www.ebshvac.com

MEIER SUPPLY CO., INC.

Refrigeration, Air Conditioning & Heating



Michael A. Mecchi
Commercial Sales Engineer
610.437.9818 Office
610.437.4924 Fax
610.674.3326 Cell
888.651.0471

827 N. Meadow Street
Allentown, PA 18102
www.MeierSupply.com
MMecchi@MeierSupply.com

Daniel A. Mello, CPD

230 Washington Ave., West Wyoming, PA 18644

Certified Plumbing Designer

Life Member - ASHRAE

Member - ASPE

Phone: 570.288.8759
Cell: 570.466.7993
e-mail: d.mello@comcast.net



The display of business cards in the NEWS recognizes the financial support of the Chapter by the individual or business and does not constitute an endorsement or recommendation by ASHRAE or the Anthracite Chapter.

Thanks to Our Sponsors



L&R Associates, Inc.
Manufacturers Representatives Mechanical Products
LINDA MONTVILLE
Providing You With The Best Solutions

267-308-0500 Fax 267-308-0505
Cell 610-333-5110 lmontville@landrassocinc.com

www.landrassocinc.com

Ruth Ann Rocchio – Research Promotion Chair



ruthannrocchio@gmail.com

Thank you for your generous support of
ASHRAE Research



**BLANKIN
EQUIPMENT**

Rick Seasholtz
Sales Engineer

office: 215.229.7400
direct: 484.322.5536
cell: 267.767.7938
fax: 215.228.2560

rseasholtz@blankinequipment.com

489 Shoemaker Road
King of Prussia, PA 19406

www.blankinequipment.com



NATIONAL AIR FILTER
Service Co. of New Jersey, Inc.

74 Sand Park Road
Cedar Grove, NJ 07009

STEPHAN SHYKA
Sales Engineer
sshyka@nationalairfilter.com
Cell: (908) 400-9151

Main Office: (201) 438-0800
Direct: (973) 559-9932
Fax: (201) 438-0049



R. Paul Silvestre
Inside Sales Associate Applied Products

Paul.Silvestre@bjtterraoni.com
Cell: 215-431-9357



Charles C. Smith, P.E.
principal
cell: 570.760.9010
csmith@smithmiller.net
www.smithmiller.net

hvac
plumbing
fire protection
electrical
technology
energy
commissioning

providing total integration of engineered systems

38 N. Main Street, Pittston, PA 18640 p: 570.299.5865 ext 303 f: 570.299.7865

The display of business cards in the NEWS recognizes the financial support of the Chapter by the individual or business and does not constitute an endorsement or recommendation by ASHRAE or the Anthracite Chapter.

**Anthracite Chapter
Past-Presidents**

2015-16 Rich Karns	2006-07 John Havenstrite	1997-98 Dean Butler	1988-89 Bud Reilly
2014-15 Matt Archey	2005-06 Manish Patel	1996-97 Charlie Smith	1987-88 Ray Suhocki
2013-14 Matt Archey	2004-05 A.J. Lello	1995-96 Chuck Swinderman	1986-87 Jerry Peznowski
2012-13 Tracey Jumper	2003-04 Dennis Gochoel	1994-95 John Walker	1985-86 Lee Garing
2011-12 A.J. Speicher	2002-03 Phil Latinski	1993-94 Dennis McGraw	1984-85 Spence Martin
2010-11 Tom Swartwood	2001-02 Mike Moran	1992-93 Scott Harford	1983-84 Donald Brandt
2009-10 Brian Flynn	2000-01 Dennis Gochoel	1991-92 Dan Mello	1982-83 Rich Santee
2008-09 Eric Zanolini	1999-00 John Durdan	1990-91 Mark Hagen	1981-82 Bob Mugford
2007-08 Walt Janus	1998-99 Matthew Martin	1989-90 Paul Dreater	1980-81 Kerry Freeman

ANTHRACITE CHAPTER MEETINGS & EVENTS 2016-17

Date	Theme	Program	Speaker
Sept. 20	Membership/ Bring-a-Buddy	Seismic Piping Design for Hospitals and Lab Spaces	Phil Argersinger
Oct. 18	Research Promotion – Donor Recognition	Boiler Installation Requirements	Bill James
Nov. 15	Students/YEA	Improving Health Through Energy Efficiency	Al Neuner
December	Family Night	No Meeting	--
Jan. 10	Technical Tour	Wegman's Refrigeration Tour	Bill Frederick Frank Kilyanek
Jan. 17	Research Promotion	System Effects and Their Implications on Fan Performance	Ron Michael
Feb. 21	Engineer's Week Joint Meeting w/ PSPE	Document Management and Discovery – How Documents & E-mails Are Used in Litigation	Chris McDonald*
Mar. 21	Nominating Night Joint Mtg. w/ SMACNA	Energy Recovery Wheels	James Martin
Mar. 31	RP Fundraiser	Wisecrackers Comedy Club	--
April 18	Students/Membership	A Holistic Overview of Technologies and Strategies to Achieve Deep Energy Reductions in Laboratories	Gordon Sharp*
April 20	ASHRAE Webcast	Take Control: Using Analytics to Drive Building Performance	Panel
May 16	Past-Presidents	Kitchen Exhaust Hoods	TBA
June 20	Fun & Fellowship	Mark A. Hagan, PE Memorial Golf Outing	--
Aug. 17-19	Chapters Regional Conf.	2017 Region III CRC - Roanoke, VA	--

*ASHRAE Distinguished Lecturer

ASHRAE MISSION

- To advance the arts and sciences of heating, ventilating, air conditioning and refrigerating to serve humanity and promote a sustainable world.

ASHRAE VISION

- ASHRAE will be the global leader, the foremost source of technical and educational information, and the primary provider of opportunity for professional growth in the arts and sciences of heating, ventilating, air conditioning and refrigerating.

The Anthracite Chapter NEWS

Walt Janus, Editor, c/o Greenman-Pedersen, Inc., 50 Glenmaura National Blvd, Suite 102, Scranton, PA 18505

2017 ASHRAE WEBCAST

TAKE CONTROL:

USING ANALYTICS TO DRIVE BUILDING PERFORMANCE

Where: Ruth's Chris at Mohegan Sun, Wilkes-Barre
When: April 20, 2017, 1pm-4pm
FREE Lunch served at noon
FREE Social after the webcast
RSVP: c134cttc@ashrae.net by April 13, 2017

Topic Summary

Describe key elements of controls and analytics & quantify how applying best practice controls improves building performance to achieve reduced operational costs

Reasons to Attend

Outstanding Topic

Peer Interaction

Free PDHs

Free WiFi

Free Lunch

Free Social

THANK YOU TO OUR SPONSORS!



www.ashrae.org/webcast



Shaping Tomorrow's
Built Environment Today

YEA (Young Engineers in ASHRAE) Bowling Meet and Greet

Who: Any Wilkes Engineering student

What: Have a fun time bowling with local professionals, while enjoying pizza, wings, and soda. The two hours of bowling, shoe rental, and food is free to anyone attending the event.

Where: Chacko's Family Bowling Center (195 Wilkes-Barre Blvd, Wilkes-Barre, PA 18702)

When: Thursday April 20th, 2017 5:30-7:30.

***If you plan on attending, please email
seth.kunkel@wilkes.edu to RSVP by Tuesday, April 18th.***



Using CO₂ in Supermarkets

By **Andy Pearson, Ph.D., CEng.**, Member ASHRAE, and **Andy Campbell**, Member ASHRAE

The timing of supermarkets' transition from CFCs to HCFCs in the 1990s and then on to HFCs is location specific. For instance, the shift to HFCs came much later in North America than Europe. However, in parts of Scandinavia and Central Europe, carbon dioxide systems appeared in the early 1990s and became commonplace by 2000.

A trial installation constructed in 1991 in Kilmarnock, Scotland,¹ provided valuable learning experience, but the concept was shelved. One difficulty was the installation of site pipe work, which used compression fittings. The change in temperature from installation to operation was too great, so many of the fittings leaked when cold.

The installation used ammonia as the high side refrigerant of the cascade sys-

tem, but it was too small to be economical with ammonia. The plant was oversized using the smallest available ammonia screw compressor running at half speed. Carbon dioxide was condensed in the ammonia evaporator on the roof of the store and was pumped to display cabinets and cold storage rooms, with no compressor in the carbon dioxide circuit. This concept was published in patents in Great Britain, France, Germany and the United States,

but was not commercialized. The basic system is shown in the illustration from the patent (*Figure 1*).

Although the idea stalled in Britain, it was adopted in Sweden where it quickly gained acceptance.² Further installations followed in Norway, Denmark and Switzerland, giving these countries a leading position in the use of carbon dioxide. In Britain the search for alternatives to fluorocarbons continued with many alternatives tested, but none achieving general acceptance. Such systems included installations with ammonia chillers circulating

About the Authors

Andy Pearson, Ph.D., CEng., is managing director—contracts at Star Refrigeration and an associate of Star Technical Solutions in Glasgow, Scotland. **Andy Campbell** is head of refrigeration—environmental at Tesco Stores in Welwyn Garden City, Hertfordshire, United Kingdom.

glycol to the shop floor, and chillers with heat transfer fluids such as polydimethylsiloxane or potassium formate solution and water-cooled integral units with low charge propane plant. Meanwhile, the conversion from R-12 in North America was mainly to R-22 with some stores experimenting with glycol or the other heat transfer fluids.³

Scandinavia and Central Europe led the way on further development. In these systems carbon dioxide is compressed to a high pressure and rejects heat directly to ambient. The evaporating pressure is below the critical point, but the heat rejection stage is above it, so these are called transcritical systems. This requires a completely new way of thinking about equipment design and configuration even to the vocabulary used.⁴ Transcritical operation presents some significant challenges to the system designer, and many system designs were produced to overcome them.

A great difficulty is that there is no scope for refrigerant inventory in the high-pressure side as the heat rejection is accomplished by gas cooling, not by condensation. Most designers incorporate a receiver somewhere on the low-pressure side, either as an intermediate flash tank part way through a two-stage expansion or as a suction trap after the evaporator.⁵ The heat rejection side of the system must also be able to switch from operation as a gas cooler in higher ambient to operation as a more traditional condenser in colder weather to achieve best efficiency. The high operating pressure required does not present a problem, but if the design pressure for site installed pipe work is above 40 bar (580 psig), then brazed joints cannot be used due to the annealing effect of the brazing process on the copper tube.

Use of carbon dioxide has evolved into three distinct groups:

1. As a phase-changing secondary fluid for chiller and low-temperature applications;
2. In a cascade, where a carbon dioxide compressor raises the gas from low-temperature conditions up to an intermediate temperature and a separate refrigerating system provides the heat extraction from the carbon dioxide condenser; and
3. In a transcritical arrangement, where there is no need for an additional refrigerating system (as heat is rejected from the carbon dioxide to ambient in a supercritical gas cooler).

These systems are described in detail in a comprehensive review by Madsen⁶ and are shown in *Figure 2*. To date, transcritical systems have been widely accepted in Europe, have

been used only in a small number of trial installations in Britain, and have not yet been deployed in North America.

Variants of each system exist, and sometimes they are used in combination. A cascade system for low-temperature cabinets might be coupled to a secondary system for the chill cases, or to a transcritical chill unit. Some novel approaches to pumping have also been used, such as a secondary system using subcooling of the high-stage liquid line to generate the driving force for the carbon dioxide liquid circulation without using a pump.⁷

Secondary loops are the simplest to operate but are expensive to install, if the cost of the high-stage plant is included. However, installations that retain the existing system, and are reconfigured to work with an adjacent carbon dioxide pump set, offer a relatively low cost route into carbon dioxide use while the sales floor is being refurbished.

Cascade systems are more complex, but for low-temperature applications, a cascade plant will be cheaper than a secondary, which requires the primary refrigerant to run at very low temperature. Transcritical systems offer the lowest cost alternative, but the technology is generally viewed as too experimental in Britain and America, despite the hundreds of systems already in operation in Denmark, Sweden, Norway, Germany, Luxembourg, Belgium, Switzerland and Italy. Concerns are regularly voiced about the energy efficiency of these systems.

Madsen⁶ showed that in Northern Europe air-cooled systems can be up to 5% more efficient, but in the south, there was a penalty of up to 5%. Adiabatic cooling has been used to overcome this.⁸ Hybrid condensers or compact evaporative units offer further

improvement. It is also probable that greater use will be made of the high temperature water heating capability of transcritical units, offering a utility not currently available from standard supermarket packs.⁹

These systems share some common disadvantages. The design pressure of the low pressure side of the system is around 40 bar (580 psig) for chill and either 40 bar (580 psig) or 27 bar (390 psig) for low temperature. It is necessary to limit the pressure in the event of a prolonged plant stoppage. This might be a standby generator powering a small condensing unit, or a thermal storage tank somewhere in the system. Often, it was simply a pressure relief arrangement that would gradually blow the charge to atmosphere to provide the necessary cooling effect. This is acceptable when a refrigeration technician is on hand to recharge the system once power is restored, but once the systems

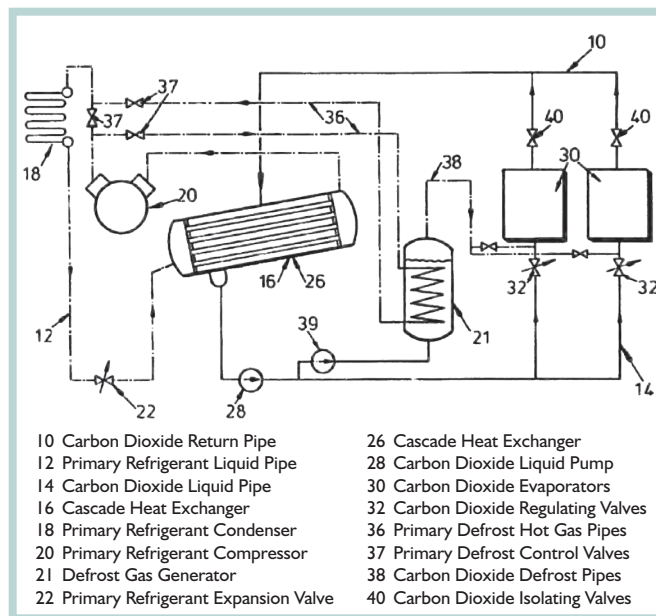


Figure 1: Carbon dioxide as a secondary refrigerant.

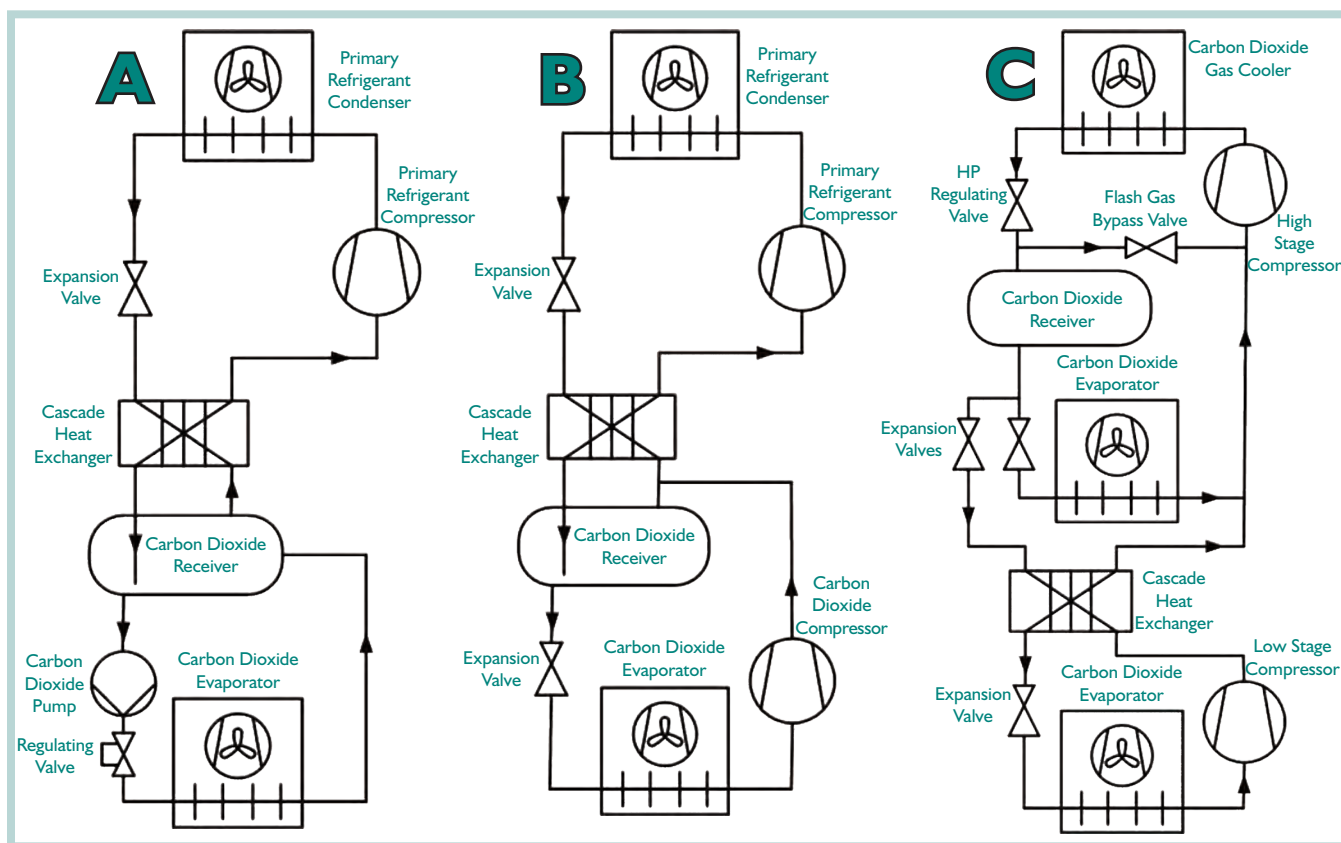


Figure 2a (left): Carbon dioxide as a secondary refrigerant.⁶ Figure 2b (center): Carbon dioxide as a cascade refrigerant.⁶ Figure 2c (right): Carbon dioxide as a transcritical refrigerant.⁶

become more widespread the risk of not having refrigeration for several hours after power is restored is increased.

These systems also are not resilient to component malfunction or operator error. While these systems are relatively uncommon, this has not been a problem because they tend to be serviced by the best available technician who is familiar with the plant and has been recently trained in its operation. However, as numbers increase, the skill level of the attendants is likely to be reduced. Transcritical systems with intermediate receivers (flash tanks) are sensitive to charge level. Excess refrigerant is likely to flood over to the compressors, particularly if the charge was set under light load and then the utilization increased. Systems without suction receivers are also susceptible to compressor damage in the event of a control valve malfunction. This could be caused by operator error in the valve setup, or by the valve sticking open, or in the case of electronic valves by a failure in the control circuit or the sensors. The consequence always will be significant damage to the compressors in these systems.

The installed systems are different than current technology, leading to further concerns about operator skills in the long term. Efficiency is similar to current HFC technology, with scope for significant improvement in this respect, particularly in the suction and discharge pressures at which plants are operating.

A supermarket chain set up a development project in Britain in conjunction with an industrial refrigeration consultant, to find solutions to these deficiencies. The goal was for carbon dioxide

to be deployed across the entire estate without high energy bills or unreliable operation. A detailed study of natural refrigerant options showed that transcritical carbon dioxide offered the best prospects for capital cost, efficiency and reliability.

This new system was to be resilient to operator error or component malfunction, to withstand power outages without dependence on external cooling or loss of refrigerant and be as familiar as possible to the service technicians.

The typical store considered in the design exercise had a footprint of 8500 m² (91,500 ft²), requiring a chill load of 250 kW (71 tons) and a low-temperature load of 64 kW (18 tons). This is handled by four chill packs and two low-temperature packs. The chill packs are transcritical, with an air-cooled gas cooler, and three semihermetic compressors. Instead of using an intermediate receiver as the flash gas separator these packs have a full-sized receiver in the suction line. This uses an internal heat exchanger to reduce the temperature of the gas cooler outlet and provides protection to the compressor against liquid carryover. The receiver also is sized as a fade-out vessel, giving sufficient volume in the low pressure side of the system to limit the pressure rise under standstill conditions to 75 bar (1100 psig). The low-temperature packs are of the cascade type, using brazed plate heat exchangers as condensers. Each pack has three condensers, which are connected to three separate chill packs, providing maximum resilience for the low-temperature systems in the event of a failure of one of the chill packs. There

is a receiver on the high pressure side of the low-temperature packs, which also provides fade-out capability.

In warmer weather the chill plants will operate in transcritical mode, with the refrigerant flow from the gas cooler regulated by an expansion valve, which is set to maintain optimum compressor discharge pressure. The expanded refrigerant, a mixture of liquid and gas, passes through a gas separator to electronic expansion valves at each of the evaporators. The gas separator is a small in-line fitting. It does not have to separate all liquid out of the gas stream, but only to ensure that there is no gas in the liquid stream. The expansion valves at the evaporators are of a standard pulse-modulated type and use a standard controller, but with slightly different software. Whereas a normal controller is set to optimize superheat, with a minimum superheat value of 2 K (3.6°F), the revised software is configured to aim for a maximum value of 2 K (3.6°F). The evaporators are, on average, overfed with some liquid returning to the suction receiver. This, together with the small amount of liquid from the gas separator, provides the cooling for the gas cooler outlet. The result is that the enthalpy of the liquid fed to the expansion valves is as low as possible, the evaporator surface is more effectively used and the suction pressure can be a few degrees higher as there is no need for superheat at the evaporator outlet.

When the weather is colder the main expansion valve drives wide open, allowing the compressor discharge gas to condense in the gas cooler. The condensed liquid is fed at higher pressure to the case expansion valves, which operate in the same control mode as before. Although the evaporators are always flooded, and return some liquid in the suction line, the compressors are protected by the suction receiver, which is large enough to act as a liquid separator. A patent application for the design of the chill system was submitted in February 2009. *Figure 3*, from the patent application, shows the schematic circuit of the system.

The low-temperature packs also have three semihermetic compressors, operating sub-critically with a constant discharge pressure of about 35 bar (about 500 psig). The evaporating condition is about 15 bar (about 220 psig). The three brazed plate condensers are controlled using pulse modulated electronic expansion valves. If one of the condensers fails the discharge pressure only has to rise by 2 K (3.6°F) for the other units to carry the full load, giving maximum resilience on the low-temperature side. One of the compressors on each pack is speed controlled and the other two are fixed speed.

The pack capacity is controlled by an industry-standard system, which also provides a graphic user interface for the system.

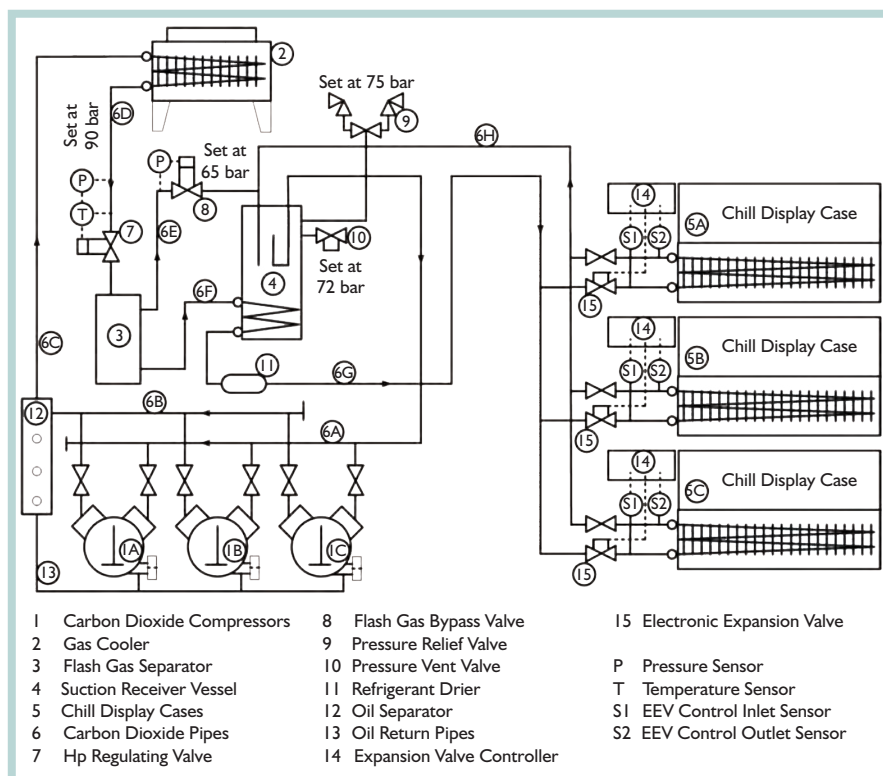


Figure 3: Transcritical supermarket system, from patent application, 2010.

The control is modular, so that failure of any one component does not prevent the rest of the system from running.

A test unit was constructed in Derby, England late in 2008 and has provided stable and reliable operation since then. This system has six chill cases and three low-temperature cabinets, representing about one-third of the capacity of the standard packs. This means that it is not possible to give reliable performance figures for the design concept as it is only lightly loaded, but the control philosophy and evaporator performance are meeting the design intent, and it is expected that overall running costs (without allowing for any heat recovery) will be up to 10% lower than a typical HFC system. The test unit for the chill system is shown in *Photo 1*.

The major challenges in constructing the test unit were to find control components suitable for the design pressure of 75 bar (1100 psig) and to install a suitably rated piping system. Components including the expansion valves were adapted to meet the pressure requirement, and operated satisfactorily throughout the test. The piping was installed using a permanent type of compression fitting capable of withstanding over 100 bar (1450 psig). The joints can be made as quickly as a brazed joint, and unlike the joints used in 1991 there were no leaks when the piping was down to temperature. A section through one of the fittings is shown in *Photo 2*. A modest investment in tooling is required, but this can be reused many times, so the cost per project is not significant.

The first two supermarkets were equipped with the new system at the end of 2009. Early indications are that the predicted performance improvement over more conventional transcritical

	Chill Cases	Frozen Cases
Secondary System	Cheapest and simplest option if existing high side equipment is reused. Can be as efficient as existing HFC systems.	Expensive and less efficient than other CO ₂ options, but easier to install. Simplest system to service and maintain.
Cascade System	Not used for chill systems.	Requires 40 bar (580 psig) compressor and condenser. Can be served by any high side equipment (HFC, glycol, HC, ammonia or transcritical CO ₂).
Transcritical System	Cheapest option for new installations or if all existing equipment is to be replaced. Less familiar for service and maintenance. Requires higher pressure components. There is scope for further improvements in gas cooling techniques, capacity and efficiency.	Can be the low stage of a two-stage system, or served by a separate cascade plant. This requires an extra heat exchanger, but gives the benefit of higher reliability. Each low-stage pack can be served by several high-stage packs in parallel, giving further reliability.

Table 1: Summary of secondary, cascade and transcritical systems used for chill and frozen cases.

designs is being achieved, with the saturated suction temperature of the chill cases about 7 K (12.6°F) higher than the conventional designs. This suggests that the annual energy consumption will be about 20% less than for other CO₂ transcritical systems. Further development is planned, including testing scroll compressors for the low-temperature packs and incorporating the parallel compression method of economizing to the chill packs to provide increased capacity and improved efficiency. Although initially there will be a premium on the capital cost of about 40% compared to conventional systems, the supermarket aims to achieve cost parity within 18 months. The initial additional cost will be recouped through improved efficiency and reduced repair costs (including the cost of replacement refrigerant) in less than three years. (The system types are summarized in Table 1.)

The majority of supermarkets around the world do not use carbon dioxide, but the transition from HFCs is gathering pace. Most users who decide to adopt carbon dioxide choose to implement a combination of secondary and cascade systems, but continued development of products and system design for transcritical plants make CO₂ an increasingly attractive option. Transcritical plants probably will become the norm for European supermarkets within five years, and North America will not be far behind. This transition may be faster if additional restrictions on the use of HFCs are introduced, or if the price of HFCs is raised significantly through taxation or reduced production quotas.

The only development likely to stop this progress is the introduction of a new fluorocarbon that is suitable as a replacement for R-404A in large commercial systems, and offers low global warming potential and better efficiency. However, no such product is close to being placed on the market.

If carbon dioxide system cost cannot be reduced, then the progress will be slower, but higher capital cost will not stop the transition, only slow it down. Higher energy costs will tend to encourage the adoption of carbon dioxide, perhaps in more highly integrated systems that offer heat recovery for on-site or neighborhood use. The widely held belief that carbon dioxide systems are inherently less efficient than typical HFC installations will be shown to be false as system designers become more familiar with the techniques required to optimize systems.



Photo 1: Transcritical chill unit on test, Derby, England.

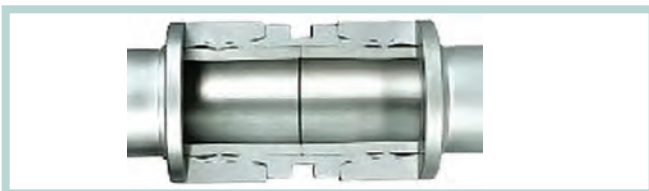


Photo 2: Section of compression fitting.

References

1. Pearson, S.F. 1993. "Development of improved secondary refrigerants." *Proceedings of the Institute of Refrigeration* (89):65–80.
2. Rolfsman, L. 1999. "Plant design considerations for cascade systems using CO₂." *Proceedings 20th Int. Congress of Refrigeration*.
3. Hinde, D.K., S. Zha. 2009. "Natural refrigerant applications in North American supermarkets." IIAR Annual Meeting.
4. Pearson, A.B. 2007. "Possibilities and pitfalls in carbon dioxide refrigeration." *Proceedings of the Institute of Refrigeration* (104).
5. Rieberer, R., M. Gassler, H. Halozan. 2000. "Control of CO₂ heat pumps." *Proceedings of the 4th IIR Conference*.
6. Madsen, K. 2009. "Living without HFCs: the danish experience." *Proceedings of the Institute of Refrigeration* (106).
7. Johansen, B. 2008. "Applications and experience with natural refrigerants carbon dioxide/CO₂ and hydro carbon R-1270." *Proceedings of the 8th IIR Conference*.
8. Heinbokel, B., A. Gernemann. 2005. "Eine neuentwickelte CO₂-Kälteanlage für den Normal und Tiefkühlbereich in einem Schweizer Hypermarkt." DKV, Würzburg.
9. Campbell, A., J.F. Missenden, G.G. Maidment. 2007. "Carbon dioxide for supermarkets." *Proceedings of the Institute of Refrigeration* (104).●